



OFFICE SPACE FOR LEASE

6

ANTARES DR  
OTTAWA, ONTARIO

  
**INSIDE EDGE**  
PROPERTIES  
BROKERAGE

FOR INQUIRIES, PLEASE CONTACT:  
[LEASING@IEPROPERTIES.COM](mailto:LEASING@IEPROPERTIES.COM)  
613.226.9902



6 ANTARES DR, PHASE I – SUITE 200

# 4,430 SQ.FT.

OFFICE SPACE FOR LEASE

BASIC RENT .....	\$14.00 PSF
ADDITIONAL RENT .....	\$18.33 PSF (2024 ESTIMATE)
ADDITIONAL COSTS .....	UTILITIES & IN-SUITE JANITORIAL
AVAILABILITY .....	IMMEDIATE
PARKING .....	3/1000



ON-SITE  
FITNESS  
STUDIO



TURN  
KEY  
OFFICE



BUILDING  
SIGNAGE RIGHTS  
AVAILABLE



MINUTES  
TO  
AIRPORT



ON-SITE  
DELI



VEHICULAR  
TRAFFIC  
35,000/DAY

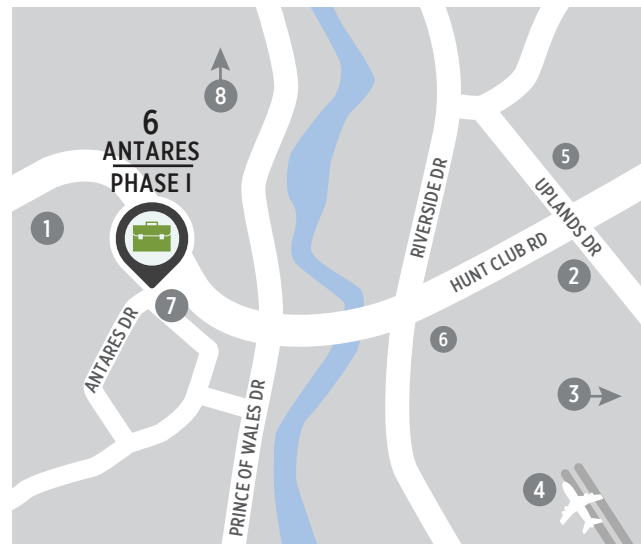


CLOSE TO  
PUBLIC  
TRANSIT

## WELL-LOCATED, MODERN OFFICE SPACE

6 Antares Drive is situated in an amenity-rich location just steps from public transportation and minutes from a variety of shops, restaurants and the Ottawa International Airport. Conveniently located at the corner of Hunt Club Road and Antares Drive, this highly visible building also offers superior signage opportunities in the well-established Rideau Heights Business Park.

## LOCATION



### POINTS OF INTEREST

- 1 Restaurants, Retail, Hotel
- 2 Event Space - Infinity Convention Centre
- 3 Event Space - EY Centre
- 4 Ottawa International Airport
- 5 Ottawa Hunt and Golf Club
- 6 Restaurants and Retail
- 7 OC Transpo Bus Stop
- 8 Downtown Ottawa (20 min drive)



FOR INQUIRIES, PLEASE CONTACT:  
LEASING@IEPROPERTIES.COM  
613.226.9902

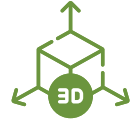


**INSIDE EDGE**  
PROPERTIES  
BROKERAGE

6 ANTARES DR, PHASE I – SUITE 200

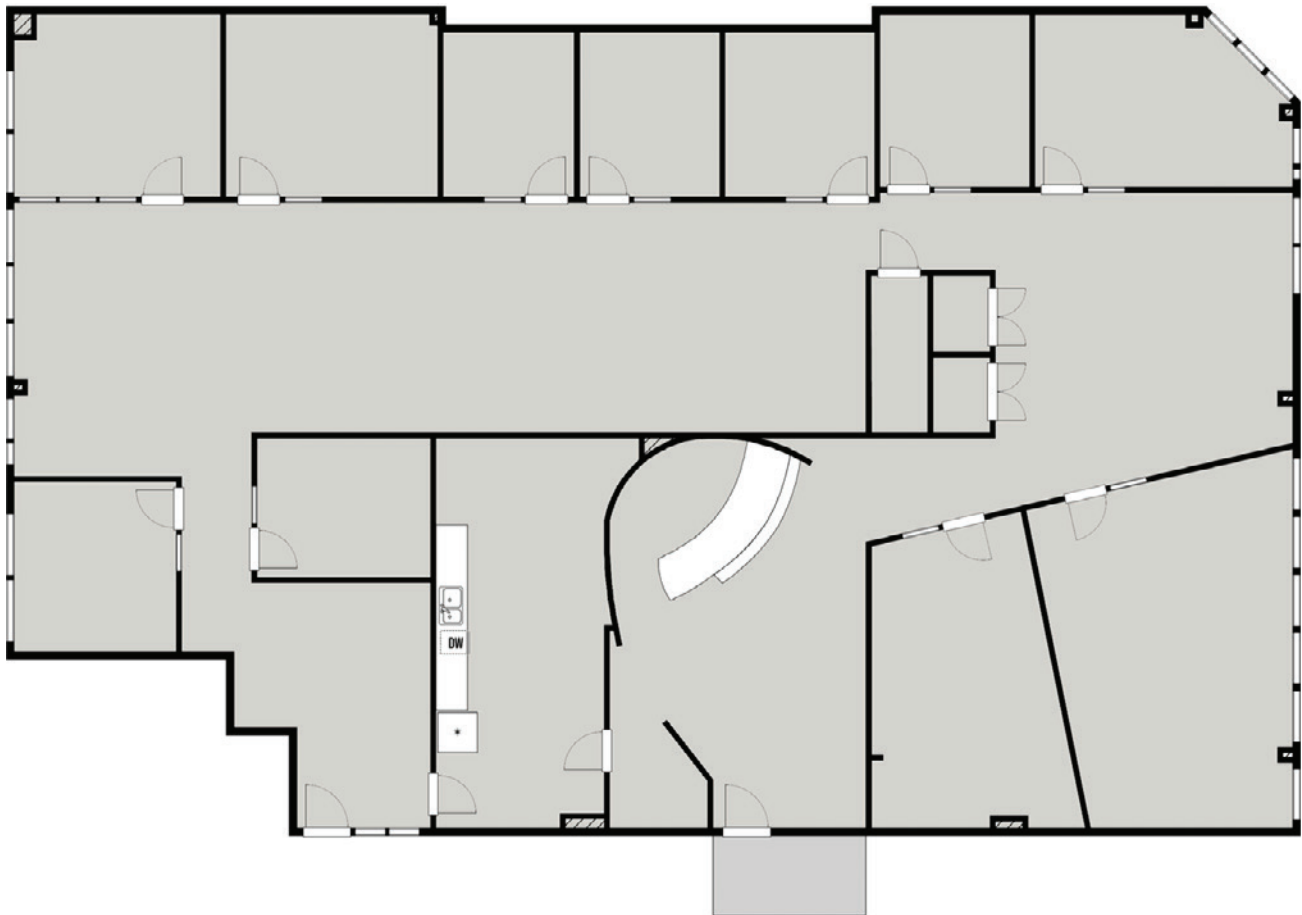


# FLOORPLAN



[CLICK TO VIEW VR TOUR](#)

**SUITE 200** | AVAILABILITY: IMMEDIATE  
4,480 SQ. FT.



FOR INQUIRIES, PLEASE CONTACT:  
LEASING@IEPROPERTIES.COM  
613.226.9902



**INSIDE EDGE**  
PROPERTIES  
BROKERAGE

6 ANTARES DR, PHASE I - SUITE 200



FOR INQUIRIES, PLEASE CONTACT:  
[LEASING@IEPROPERTIES.COM](mailto:LEASING@IEPROPERTIES.COM)  
613.226.9902



**INSIDE EDGE**  
PROPERTIES  
BROKERAGE



6 ANTARES DR, PHASE I – SUITE 200

## NEARBY AMENITIES



FOR INQUIRIES, PLEASE CONTACT:  
LEASING@IEPROPERTIES.COM  
613.226.9902