



OFFICE SPACE FOR LEASE

1150

CYRVILLE ROAD

SUITE 200 OTTAWA, ONTARIO



FOR INQUIRIES, PLEASE CONTACT:
LEASING@IEPROPERTIES.COM

613.226.9902



INSIDE EDGE
PROPERTIES
BROKERAGE

1150 CYRVILLE ROAD - SUITE 200

4,614 SQ.FT.

OFFICE SPACE FOR LEASE

BASIC RENT	\$17.00 PSF
ADDITIONAL RENT	\$19.76 PSF (2026 ESTIMATE)
INCLUDED	UTILITIES & IN-SUITE JANITORIAL
AVAILABILITY	IMMEDIATE
PARKING	2/1000



CLASS "A" OFFICE BUILDING

Just steps away from the Cyrville light-rail station and a short five-minute drive from the Central Business District, this four-storey amenity-rich building is conveniently located within the St. Laurent area in east Ottawa. Nearby, you will also find lots of restaurants, shops, hotels and services of the St. Laurent Shopping Centre.

LOCATION



POINTS OF INTEREST

- 1 St. Laurent Shopping Centre
- 2 Holiday Inn Ottawa East
- 3 Lone Star Texas Grill
- 4 Comfort Inn Ottawa East
- 5 Ottawa Station Via Rail (6 min drive)
- 6 OC Transpo & LRT Station
- 7 Downtown Ottawa (14 min drive)
- 8 Cyrville LRT Station



FOR INQUIRIES, PLEASE CONTACT:
LEASING@IEPROPERTIES.COM
613.226.9902

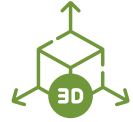


INSIDE EDGE
PROPERTIES
BROKERAGE

1150 CYRVILLE ROAD - SUITE 200



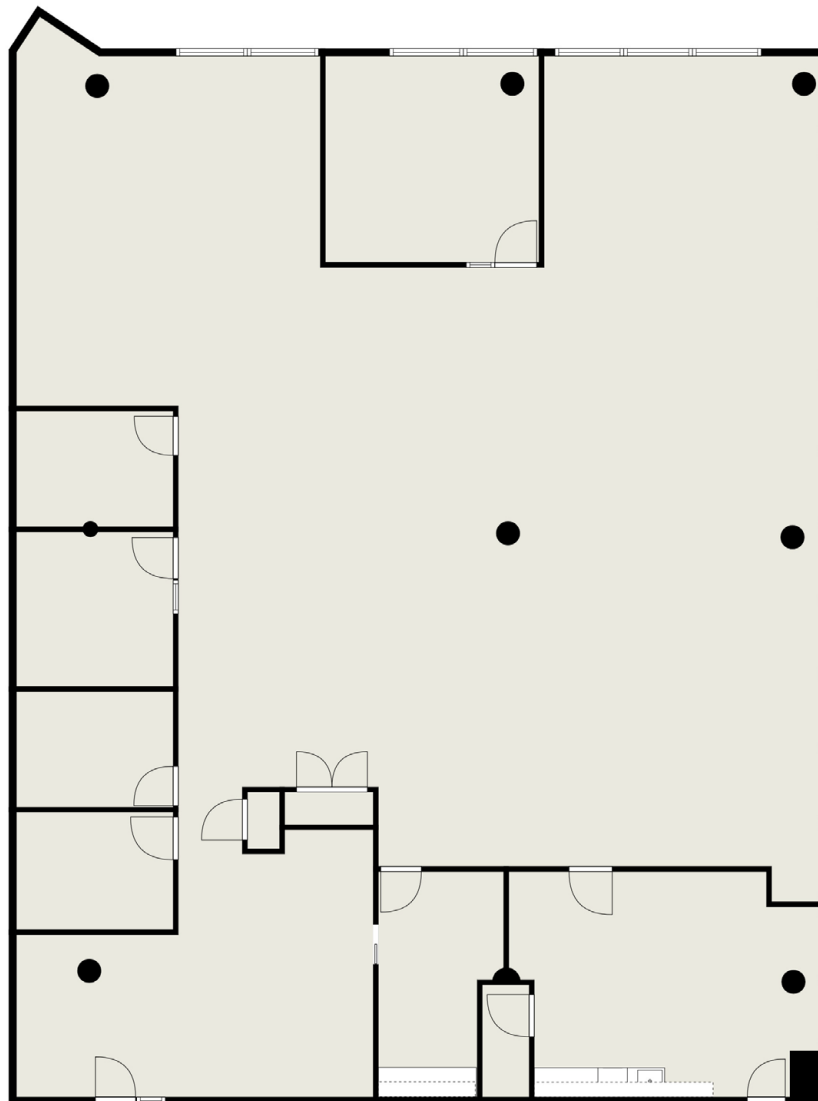
FLOORPLAN



[CLICK TO VIEW VR TOUR](#)

SUITE 200

4,614 SQ. FT. | AVAILABLE: IMMEDIATE



FOR INQUIRIES, PLEASE CONTACT:
LEASING@IEPROPERTIES.COM
613.226.9902



INSIDE EDGE
PROPERTIES
BROKERAGE

1150 CYRVILLE ROAD - SUITE 200



FOR INQUIRIES, PLEASE CONTACT:
LEASING@IEPROPERTIES.COM
613.226.9902