



OFFICE SPACE FOR LEASE

2 | GURDWARA RD
SUITE 300 OTTAWA, ONTARIO



FOR INQUIRIES, PLEASE CONTACT:
LEASING@IEPROPERTIES.COM

613.226.9902



INSIDE EDGE
PROPERTIES
BROKERAGE

2 GURDWARA ROAD, SUITE 300

UP TO
16,357 SQ.FT.

OFFICE SPACE FOR LEASE

DEMISING OPTIONS AVAILABLE

BASIC RENT	\$16.00 PSF
ADDITIONAL RENT	\$23.01 PSF (2026 ESTIMATE)
INCLUDED	UTILITIES & IN-SUITE JANITORIAL
AVAILABILITY	IMMEDIATE
PARKING	3/1000

5,418 SQ.FT.

1,294 SQ.FT.

2,878 SQ.FT.

1,885 SQ.FT.

1,967 SQ.FT.

2,915 SQ.FT.



AMPLE
ON-SITE
PARKING



BUILDING
SIGNAGE RIGHTS
AVAILABLE



MINUTES
TO
AIRPORT



PROXIMITY TO
HOTELS &
RESTAURANTS



VEHICULAR
TRAFFIC
80,000/DAY

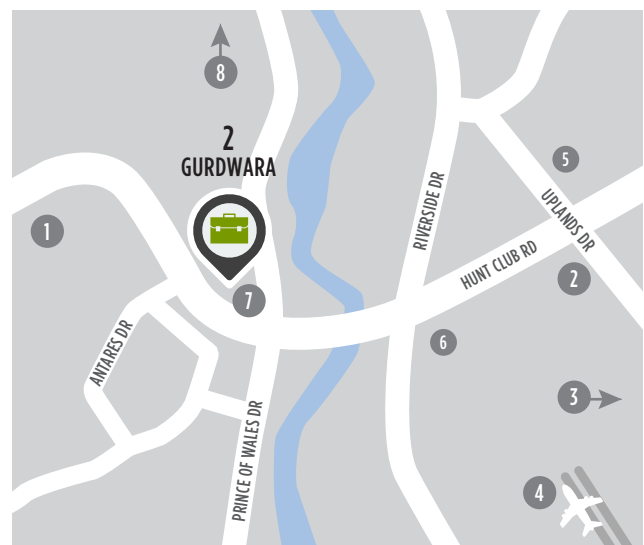


CLOSE TO
PUBLIC
TRANSIT

PROMINENTLY LOCATED CLASS A OFFICE SPACE

2 Gurdwara Road is situated in an amenity-rich location just steps from public transportation and minutes from a variety of shops, restaurants and the Ottawa International Airport. Prominently located at the corner of Hunt Club Road and Prince of Wales Drive, this Class A office building is situated in one of Ottawa's most sought after locations and has the added distinction of BOMA Bronze certification. This highly visible property offers superior signage opportunities and ample on-site parking.

LOCATION



POINTS OF INTEREST

- | | |
|--|----------------------------------|
| 1 Restaurants, Retail, Hotel | 5 Ottawa Hunt and Golf Club |
| 2 Event Space - Infinity Convention Centre | 6 Restaurants and Retail |
| 3 Event Space - EY Centre | 7 OC Transpo Bus Stop |
| 4 Ottawa International Airport | 8 Downtown Ottawa (20 min drive) |



FOR INQUIRIES, PLEASE CONTACT:
LEASING@IEPROPERTIES.COM
613.226.9902



INSIDE EDGE
PROPERTIES
BROKERAGE

2 GURDWARA ROAD, SUITE 300



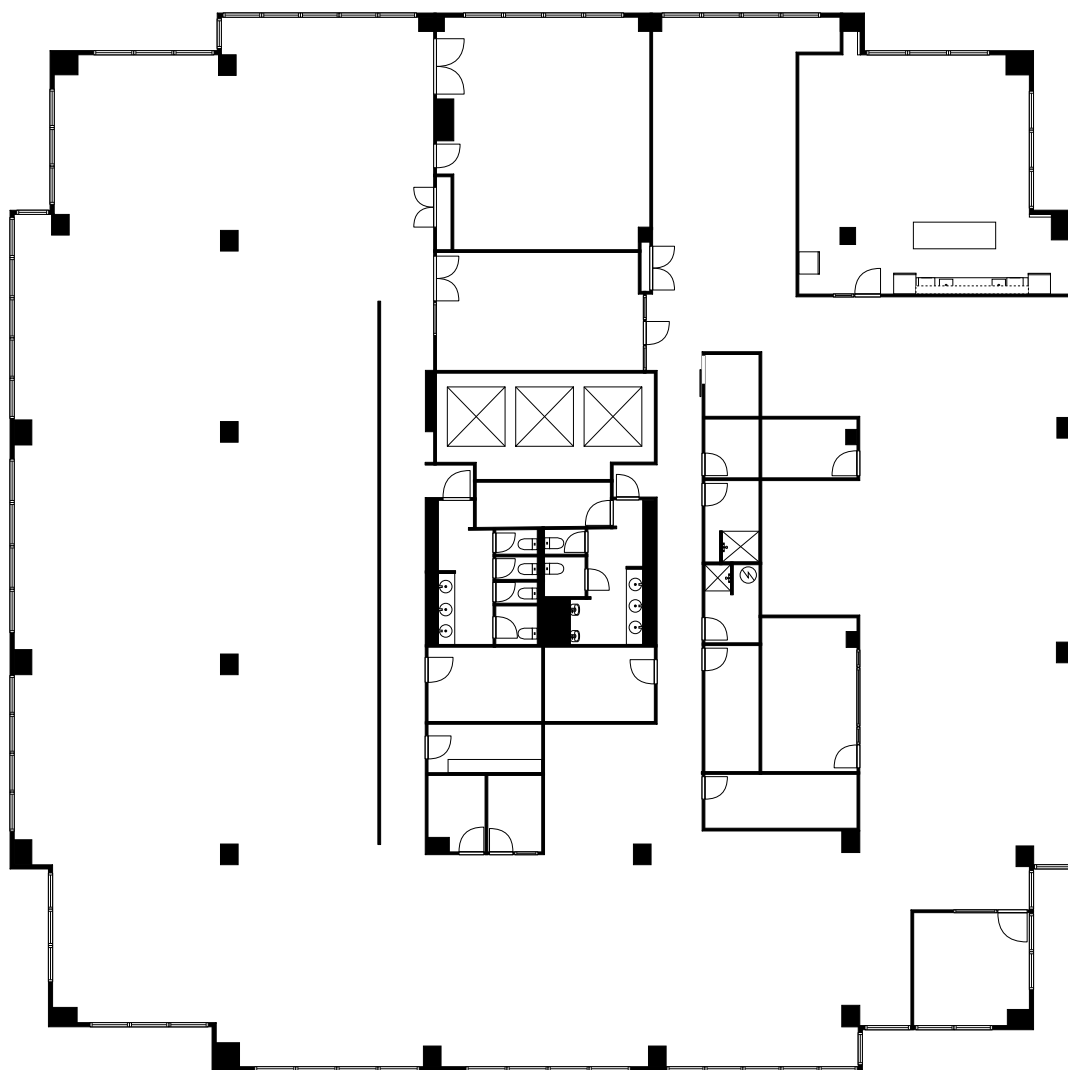
FLOORPLAN: AS BUILT



[CLICK TO VIEW VR TOUR](#)

SUITE 300

UP TO 16,357 SQ. FT.



FOR INQUIRIES, PLEASE CONTACT:
LEASING@IEPROPERTIES.COM
613.226.9902



INSIDE EDGE
PROPERTIES
BROKERAGE

2 GURDWARA ROAD, SUITE 300

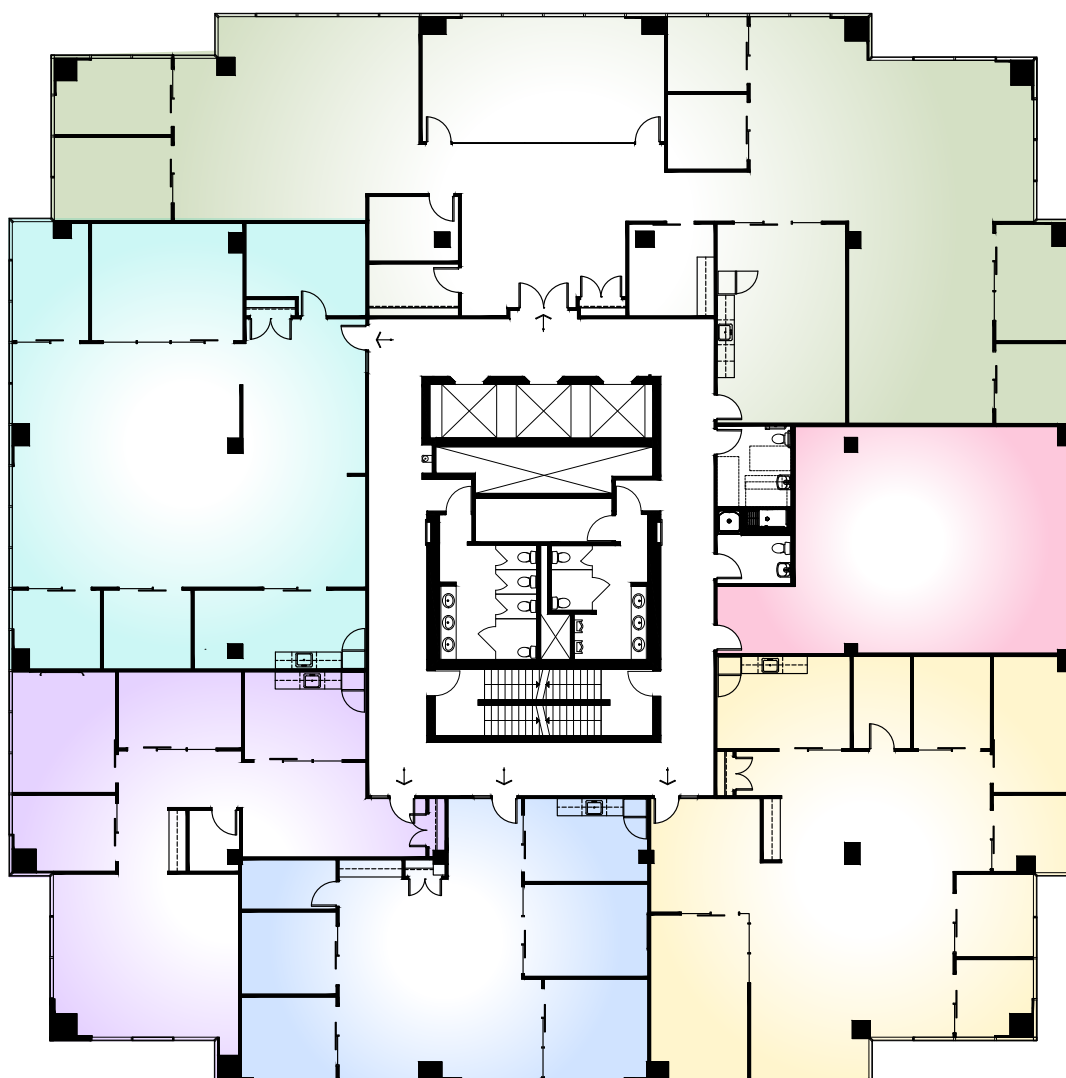


FLOORPLAN: PROPOSED DEMISING OPTIONS



[CLICK TO VIEW VR TOUR](#)

300 A	5,418 SQ.FT.	300 B	1,294 SQ.FT.	300 C	2,878 SQ.FT.	300 D	1,885 SQ.FT.	300 E	1,967 SQ.FT.	300 F	2,915 SQ.FT.
-------	--------------	-------	--------------	-------	--------------	-------	--------------	-------	--------------	-------	--------------



FOR INQUIRIES, PLEASE CONTACT:
LEASING@IEPROPERTIES.COM
613.226.9902



INSIDE EDGE
PROPERTIES
BROKERAGE

2 GURDWARA ROAD, SUITE 300



FOR INQUIRIES, PLEASE CONTACT:
LEASING@IEPROPERTIES.COM
613.226.9902



INSIDE EDGE
PROPERTIES
BROKERAGE

2 GURDWARA ROAD, SUITE 300



NEARBY AMENITIES



FOR INQUIRIES, PLEASE CONTACT:
LEASING@IEPROPERTIES.COM
613.226.9902