

LOWER LEVEL SPACE FOR LEASE

464 | BANK STREET
OTTAWA, ONTARIO



FOR INQUIRIES, PLEASE CONTACT:
LEASING@IEPROPERTIES.COM

613.226.9902



INSIDE EDGE
PROPERTIES
BROKERAGE

464 BANK STREET



5,393 SQ.FT.

LOWER LEVEL SPACE FOR LEASE

BASIC RENT	\$20.00 PSF
ADDITIONAL COSTS	UTILITIES & IN-SUITE JANITORIAL
AVAILABILITY	IMMEDIATE
PARKING	3 SPACES



BUILDING
SIGNAGE RIGHTS
AVAILABLE



VARIETY OF
RESTAURANTS &
RETAIL NEARBY



PROXIMITY TO
HOTELS &
CENTRAL BUSINESS DISTRICT



CLOSE TO
PUBLIC
TRANSIT

WELL-LOCATED, LOWER LEVEL SPACE

464 Bank Street is situated in the Centretown neighbourhood with proximity to the central business district, the Glebe, and an array of shops, restaurants, and services. Centrally located on one of the city's main arteries, this highly visible building features excellent accessibility to Highway 417 and both regular and express bus routes.

LOCATION



POINTS OF INTEREST

- 1 Restaurants and Retail (Bank St.)
- 2 Restaurants and Retail (Elgin St.)
- 3 Lansdowne Park (5 min drive)
- 4 Marriott, Sheraton, and Lord Elgin Hotels
- 5 The Glebe (2 min drive)
- 6 Central Business District (4 min drive)
- 7 OC Transpo (1 min walk)
- 8 Hwy 417 East/West Ramps



FOR INQUIRIES, PLEASE CONTACT:
LEASING@IEPROPERTIES.COM
613.226.9902



INSIDE EDGE
PROPERTIES
BROKERAGE

464 BANK STREET



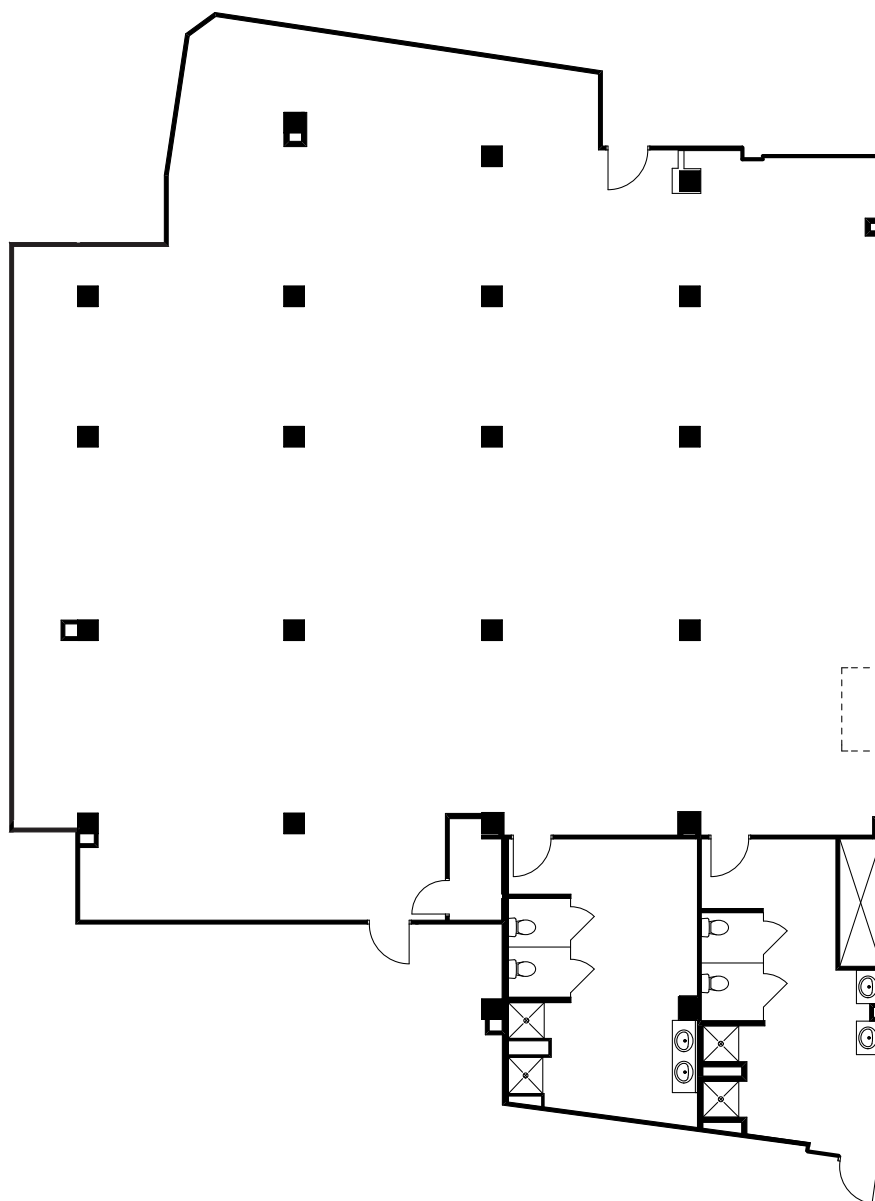
FLOORPLAN



[CLICK TO VIEW VR TOUR](#)

LOWER LEVEL SPACE

5,393 SQ. FT.

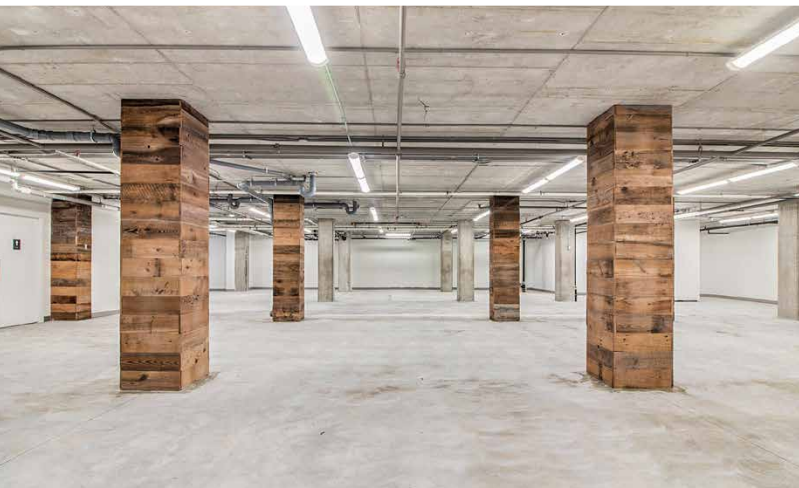
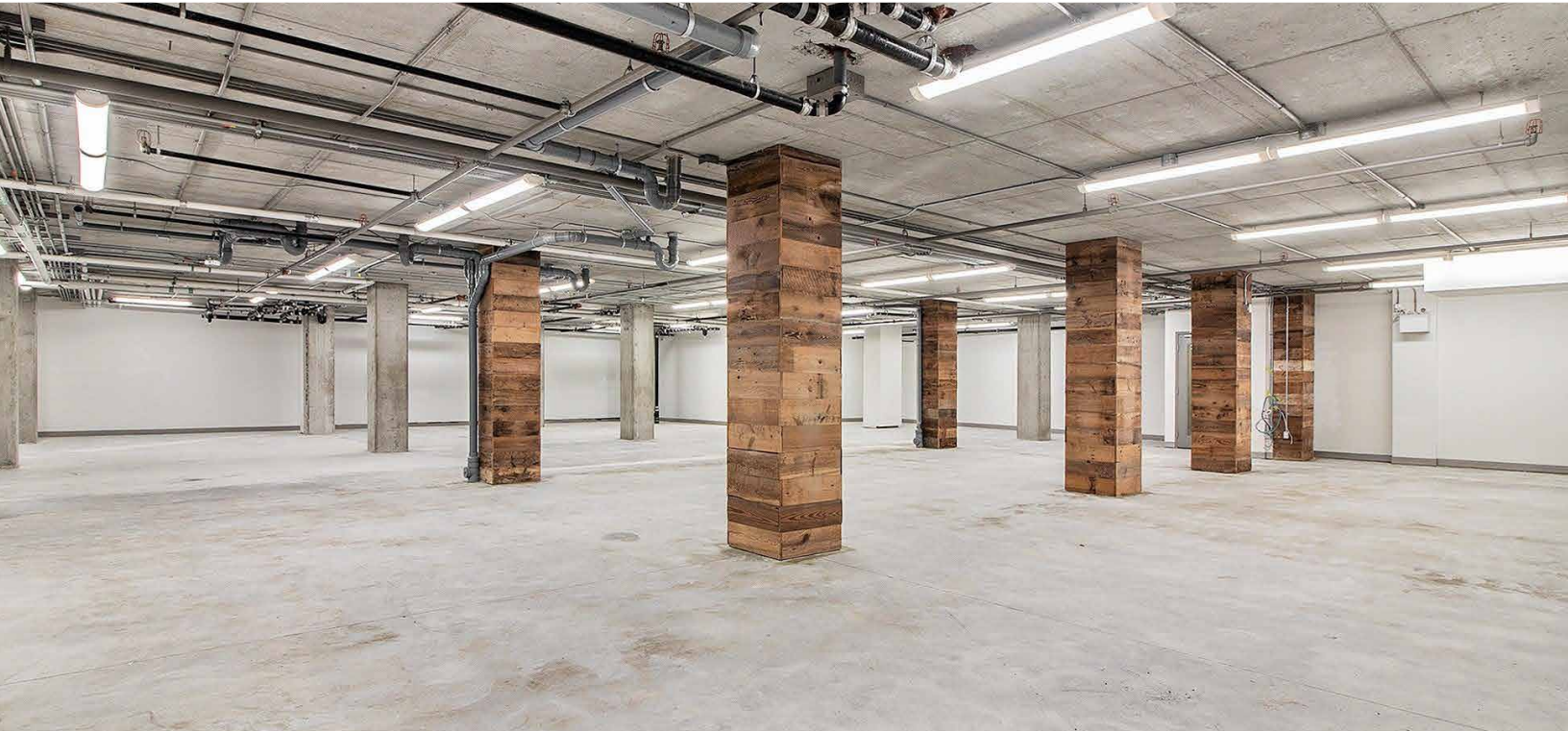


FOR INQUIRIES, PLEASE CONTACT:
LEASING@IEPROPERTIES.COM
613.226.9902



INSIDE EDGE
PROPERTIES
BROKERAGE

464 BANK STREET



FOR INQUIRIES, PLEASE CONTACT:
LEASING@IEPROPERTIES.COM
613.226.9902



NEARBY AMENITIES



FOR INQUIRIES, PLEASE CONTACT:
LEASING@IEPROPERTIES.COM
613.226.9902