

OFFICE SPACE FOR LEASE

6

ANTARES DR

PHASE III — SUITE 200 OTTAWA, ONTARIO



FOR INQUIRIES, PLEASE CONTACT:
LEASING@IEPROPERTIES.COM

613.226.9902



INSIDE EDGE
PROPERTIES
BROKERAGE



6 ANTARES DR, PHASE III - SUITE 200

9,356 SQ.FT.

OFFICE SPACE FOR LEASE

BASIC RENT	\$14.00 PSF
ADDITIONAL RENT	\$17.81 PSF (2025 ESTIMATE)
ADDITIONAL COSTS	UTILITIES & IN-SUITE JANITORIAL
AVAILABILITY	AUGUST 1 ST
PARKING	3/1000



ON-SITE
FITNESS
STUDIO



TURN
KEY
OFFICE



BUILDING
SIGNAGE RIGHTS
AVAILABLE



FULL
FLOOR
OPPORTUNITY



MINUTES
TO
AIRPORT



ON-SITE
DELI



VEHICULAR
TRAFFIC
35,000/DAY

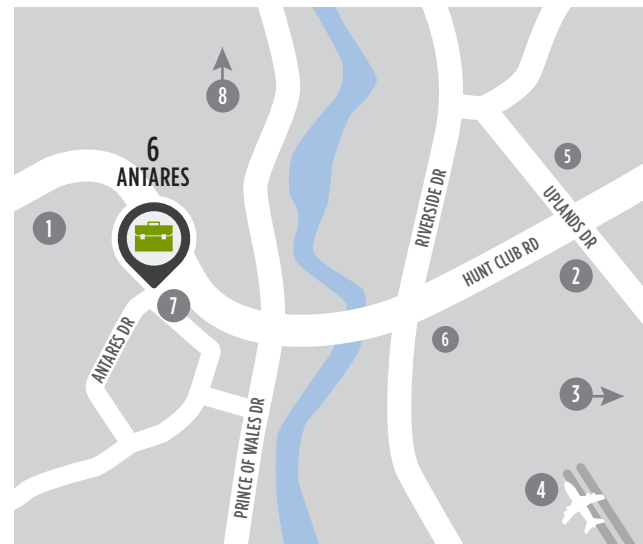


CLOSE TO
PUBLIC
TRANSIT

WELL-LOCATED, MODERN OFFICE SPACE

6 Antares Drive is situated in an amenity-rich location just steps from public transportation and minutes from a variety of shops, restaurants and the Ottawa International Airport. Conveniently located at the corner of Hunt Club Road and Antares Drive, this high-visibility building also offers superior signage opportunities in the conveniently located and well-established Rideau Heights Business Park.

LOCATION



POINTS OF INTEREST

- 1 Restaurants, Retail, Hotel
- 2 Event Space - Infinity Convention Centre
- 3 Event Space - EY Centre
- 4 Ottawa International Airport
- 5 Ottawa Hunt and Golf Club
- 6 Restaurants and Retail
- 7 OC Transpo Bus Stop
- 8 Downtown Ottawa (20 min drive)



FOR INQUIRIES, PLEASE CONTACT:
LEASING@IEPROPERTIES.COM
613.226.9902

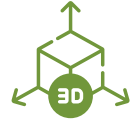


INSIDE EDGE
PROPERTIES
BROKERAGE

6 ANTARES DR, PHASE III - SUITE 200

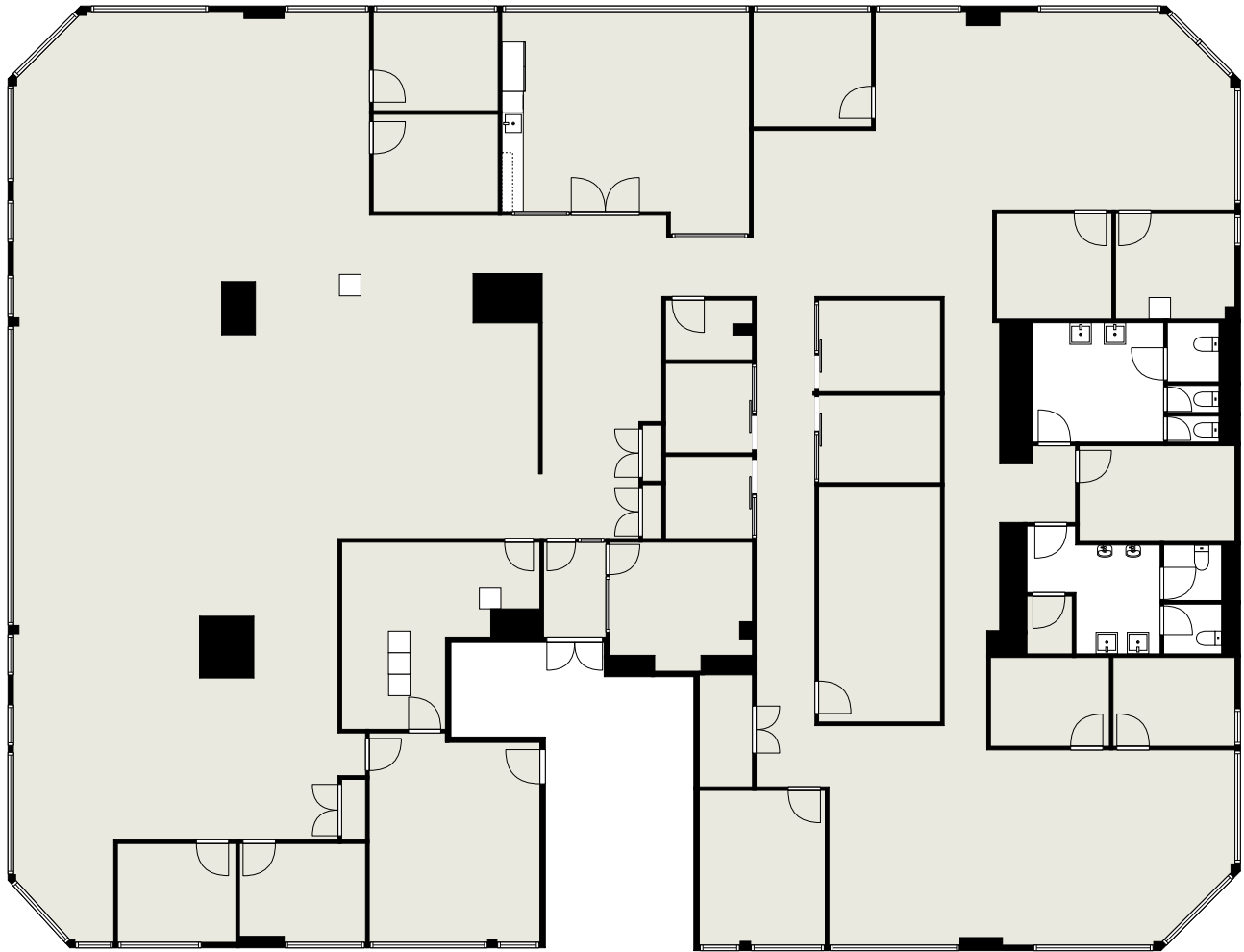


FLOORPLAN



[CLICK TO VIEW VR TOUR](#)

SUITE 200 | AVAILABLE AUGUST 1ST
9,356 SQ. FT.



FOR INQUIRIES, PLEASE CONTACT:
LEASING@IEPROPERTIES.COM
613.226.9902



INSIDE EDGE
PROPERTIES
BROKERAGE

6 ANTARES DR, PHASE III - SUITE 200



FOR INQUIRIES, PLEASE CONTACT:
LEASING@IEPROPERTIES.COM
613.226.9902



INSIDE EDGE
PROPERTIES
BROKERAGE

6 ANTARES DR, PHASE III - SUITE 200



NEARBY AMENITIES



FOR INQUIRIES, PLEASE CONTACT:
LEASING@IEPROPERTIES.COM
613.226.9902