


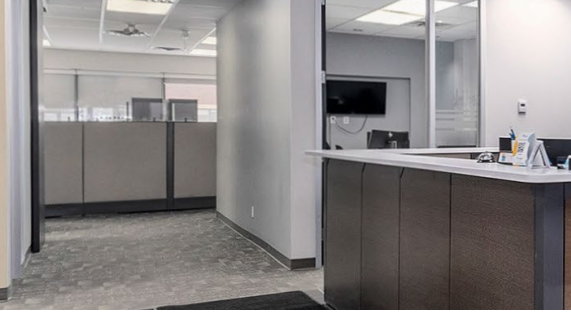


**OFFICE SPACE FOR LEASE**

**6** | **ANTARES DR**  
PHASE III — SUITE 100 OTTAWA, ONTARIO

**INSIDE EDGE**  
PROPERTIES  
BROKERAGE

FOR INQUIRIES, PLEASE CONTACT:  
[LEASING@IEPROPERTIES.COM](mailto:LEASING@IEPROPERTIES.COM)  
613.226.9902



**INSIDE EDGE**  
PROPERTIES  
BROKERAGE



6 ANTARES DR, PHASE III - SUITE 100

# 9,202 SQ.FT.

OFFICE SPACE FOR LEASE

BASIC RENT .....	\$14.00 PSF
ADDITIONAL RENT .....	\$17.81 PSF (2025 ESTIMATE)
ADDITIONAL COSTS .....	UTILITIES & IN-SUITE JANITORIAL
AVAILABILITY .....	FEBRUARY 1, 2026
PARKING .....	3/1000



ON-SITE  
FITNESS  
STUDIO



TURN  
KEY  
OFFICE



BUILDING  
SIGNAGE RIGHTS  
AVAILABLE



FULL  
FLOOR  
OPPORTUNITY



MINUTES  
TO  
AIRPORT



ON-SITE  
DELI



VEHICULAR  
TRAFFIC  
35,000/DAY

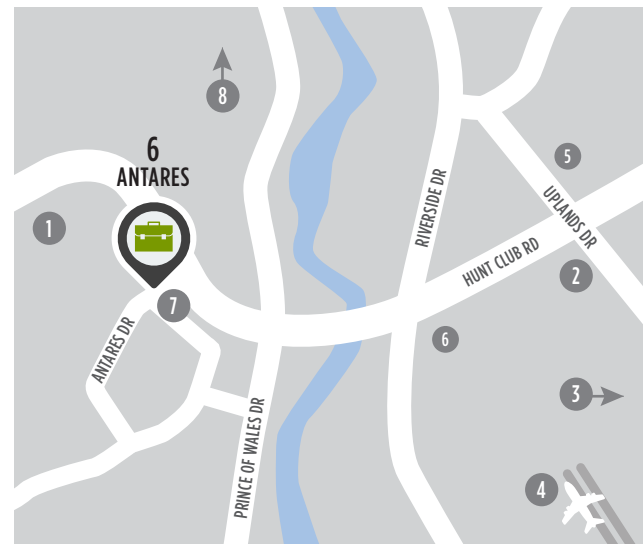


CLOSE TO  
PUBLIC  
TRANSIT

## WELL-LOCATED, MODERN OFFICE SPACE

6 Antares Drive is situated in an amenity-rich location just steps from public transportation and minutes from a variety of shops, restaurants and the Ottawa International Airport. Conveniently located at the corner of Hunt Club Road and Antares Drive, this high-visibility building also offers superior signage opportunities in the conveniently located and well-established Rideau Heights Business Park.

## LOCATION



## POINTS OF INTEREST

- |  |                                  |
|--|----------------------------------|
| 1 Restaurants, Retail, Hotel               | 5 Ottawa Hunt and Golf Club      |
| 2 Event Space - Infinity Convention Centre | 6 Restaurants and Retail         |
| 3 Event Space - EY Centre                  | 7 OC Transpo Bus Stop            |
| 4 Ottawa International Airport             | 8 Downtown Ottawa (20 min drive) |



FOR INQUIRIES, PLEASE CONTACT:  
LEASING@IEPROPERTIES.COM  
613.226.9902

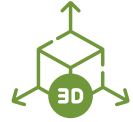


**INSIDE EDGE**  
PROPERTIES  
BROKERAGE



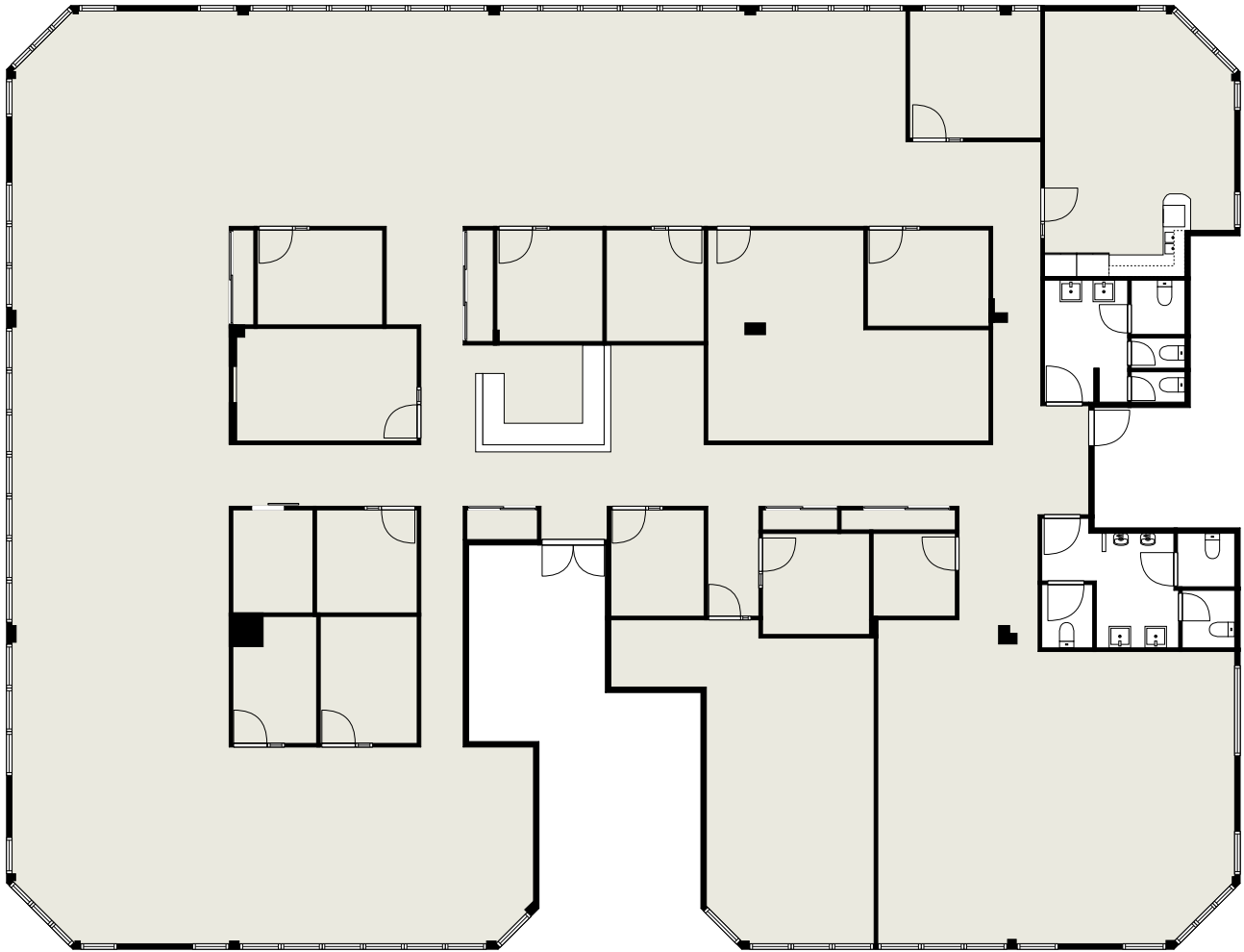
6 ANTARES DR, PHASE III - SUITE 100

# FLOORPLAN



[CLICK TO VIEW VR TOUR](#)

**SUITE 100** | AVAILABLE FEBRUARY 1, 2026  
9,202 SQ. FT.



FOR INQUIRIES, PLEASE CONTACT:  
[LEASING@IEPROPERTIES.COM](mailto:LEASING@IEPROPERTIES.COM)  
613.226.9902





**INSIDE EDGE**  
PROPERTIES  
BROKERAGE

6 ANTARES DR, PHASE III - SUITE 100



FOR INQUIRIES, PLEASE CONTACT:  
[LEASING@IEPROPERTIES.COM](mailto:LEASING@IEPROPERTIES.COM)  
613.226.9902






**INSIDE EDGE**  
PROPERTIES  
BROKERAGE

6 ANTARES DR, PHASE III - SUITE 100



## NEARBY AMENITIES



FOR INQUIRIES, PLEASE CONTACT:  
LEASING@IEPROPERTIES.COM  
613.226.9902