



OFFICE SPACE FOR LEASE

6

ANTARES DR

PHASE I, UNIT 2 OTTAWA, ONTARIO



INSIDE EDGE
PROPERTIES
BROKERAGE

FOR INQUIRIES, PLEASE CONTACT:
LEASING@IEPROPERTIES.COM

613.226.9902



6 ANTARES DR, PHASE I — UNIT 2

1,397 SQ.FT.
OFFICE SPACE FOR LEASE

BASIC RENT	\$14.00 PSF
ADDITIONAL RENT	\$16.35 PSF (2024 ESTIMATE)
ADDITIONAL COSTS	UTILITIES & IN-SUITE JANITORIAL
AVAILABILITY	OCTOBER 1 ST
PARKING	3/1000



ON-SITE
FITNESS STUDIO
& DELI



BUILDING
SIGNAGE RIGHTS
AVAILABLE



REAR DOUBLE
DOORS FOR
SHIPPING/RECEIVING



FLEXIBLE OFFICE SPACE
WITH WAREHOUSE
COMPONENT



MINUTES
TO
AIRPORT



VEHICULAR
TRAFFIC
35,000/DAY

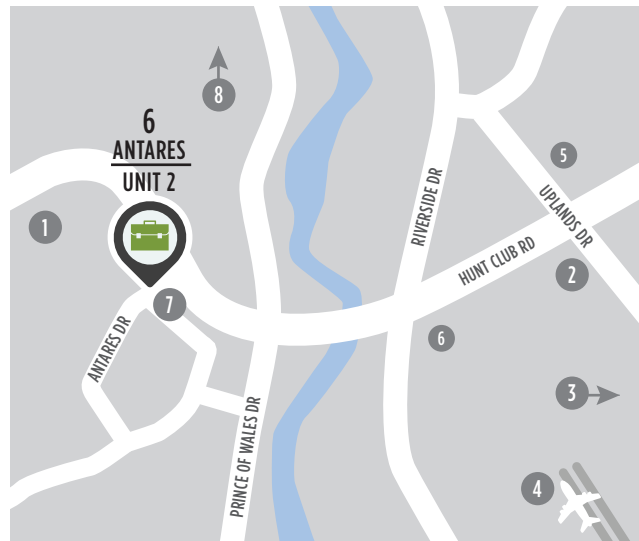


CLOSE TO
PUBLIC
TRANSIT

WELL-LOCATED, MODERN OFFICE SPACE

6 Antares Drive is situated in an amenity-rich location just steps from public transportation and minutes from a variety of shops, restaurants and the Ottawa International Airport. Situated at the corner of Hunt Club Road and Antares Drive, this high-visibility building also offers superior signage opportunities in the conveniently located and well-established Rideau Heights Business Park.

LOCATION




POINTS OF INTEREST

- | | |
|--|----------------------------------|
| 1 Restaurants, Retail, Hotel | 5 Ottawa Hunt and Golf Club |
| 2 Event Space - Infinity Convention Centre | 6 Restaurants and Retail |
| 3 Event Space - EY Centre | 7 OC Transpo Bus Stop |
| 4 Ottawa International Airport | 8 Downtown Ottawa (20 min drive) |

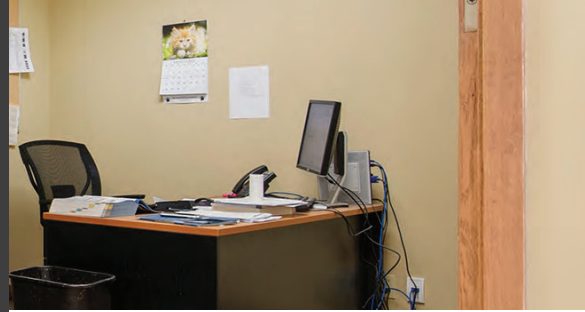


FOR INQUIRIES, PLEASE CONTACT:
LEASING@IEPROPERTIES.COM
613.226.9902

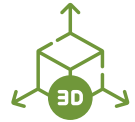


INSIDE EDGE
PROPERTIES
BROKERAGE

6 ANTARES DR, PHASE I — UNIT 2

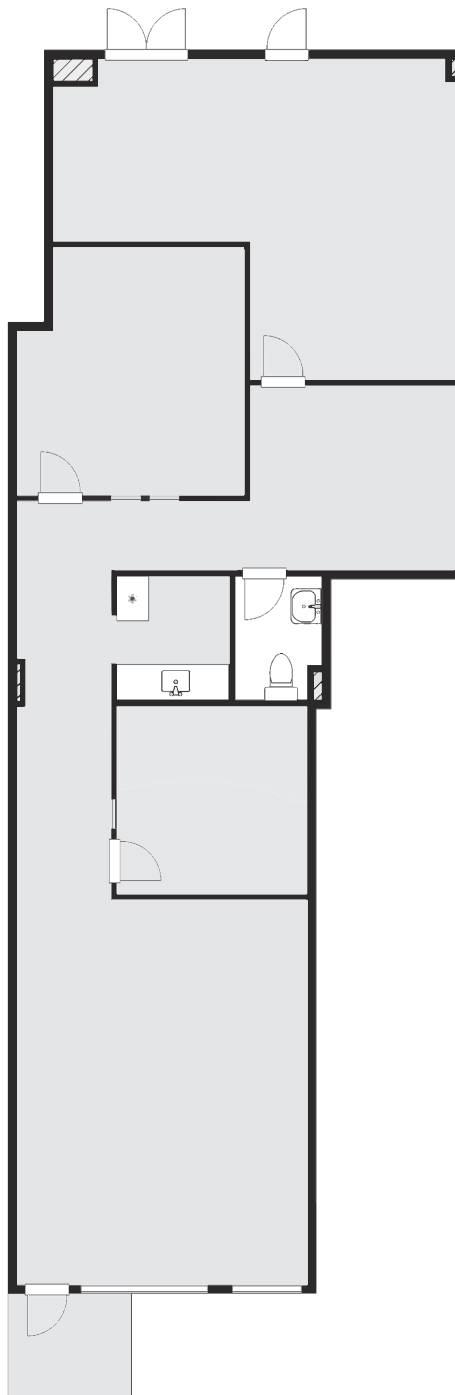


FLOORPLAN



CLICK TO VIEW VR TOUR

UNIT 2 | AVAILABLE OCTOBER 1ST
1,397 SQ. FT.

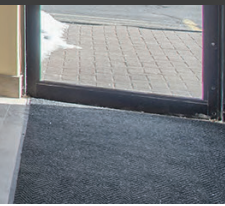


FOR INQUIRIES, PLEASE CONTACT:
LEASING@IEPROPERTIES.COM
613.226.9902



INSIDE EDGE
PROPERTIES
BROKERAGE

6 ANTARES DR, PHASE I — UNIT 2



FOR INQUIRIES, PLEASE CONTACT:
LEASING@IEPROPERTIES.COM
613.226.9902



INSIDE EDGE
PROPERTIES
BROKERAGE

6 ANTARES DR, PHASE I — UNIT 2



NEARBY AMENITIES



FOR INQUIRIES, PLEASE CONTACT:
LEASING@IEPROPERTIES.COM
613.226.9902