



**OFFICE SPACE FOR LEASE**

6

**ANTARES DR**

SUITE 202 - OTTAWA, ONTARIO



FOR INQUIRIES, PLEASE CONTACT:  
[LEASING@IEPROPERTIES.COM](mailto:LEASING@IEPROPERTIES.COM)

613.226.9902

# 1,730 SQ.FT.

OFFICE SPACE FOR LEASE

BASIC RENT .....	\$14.00 PSF
ADDITIONAL RENT .....	\$19.15 PSF (2025 ESTIMATE)
ADDITIONAL COSTS .....	UTILITIES & IN-SUITE JANITORIAL
AVAILABILITY .....	IMMEDIATE
PARKING .....	3/1000



ON-SITE  
FITNESS  
STUDIO



TURN  
KEY  
OFFICE



BUILDING  
SIGNAGE RIGHTS  
AVAILABLE



MINUTES  
TO  
AIRPORT



ON-SITE  
DELI



VEHICULAR  
TRAFFIC  
35,000/DAY

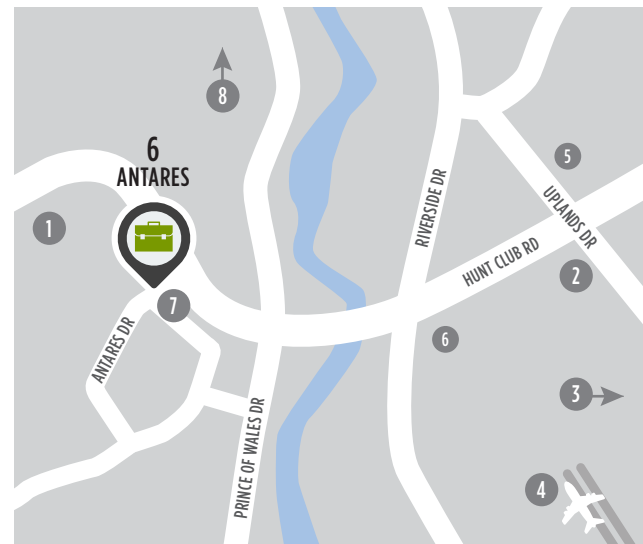


CLOSE TO  
PUBLIC  
TRANSIT

## WELL-LOCATED, MODERN OFFICE SPACE

6 Antares Drive is situated in an amenity-rich location just steps from public transportation and minutes from a variety of shops, restaurants and the Ottawa International Airport. Conveniently located at the corner of Hunt Club and Antares Drive, this highly visible building also offers superior signage opportunities in the well-established Rideau Heights Business Park.

## LOCATION



## POINTS OF INTEREST

- |  |                                  |
|--|----------------------------------|
| 1 Restaurants, Retail, Hotel               | 5 Ottawa Hunt and Golf Club      |
| 2 Event Space - Infinity Convention Centre | 6 Restaurants and Retail         |
| 3 Event Space - EY Centre                  | 7 OC Transpo Bus Stop            |
| 4 Ottawa International Airport             | 8 Downtown Ottawa (20 min drive) |





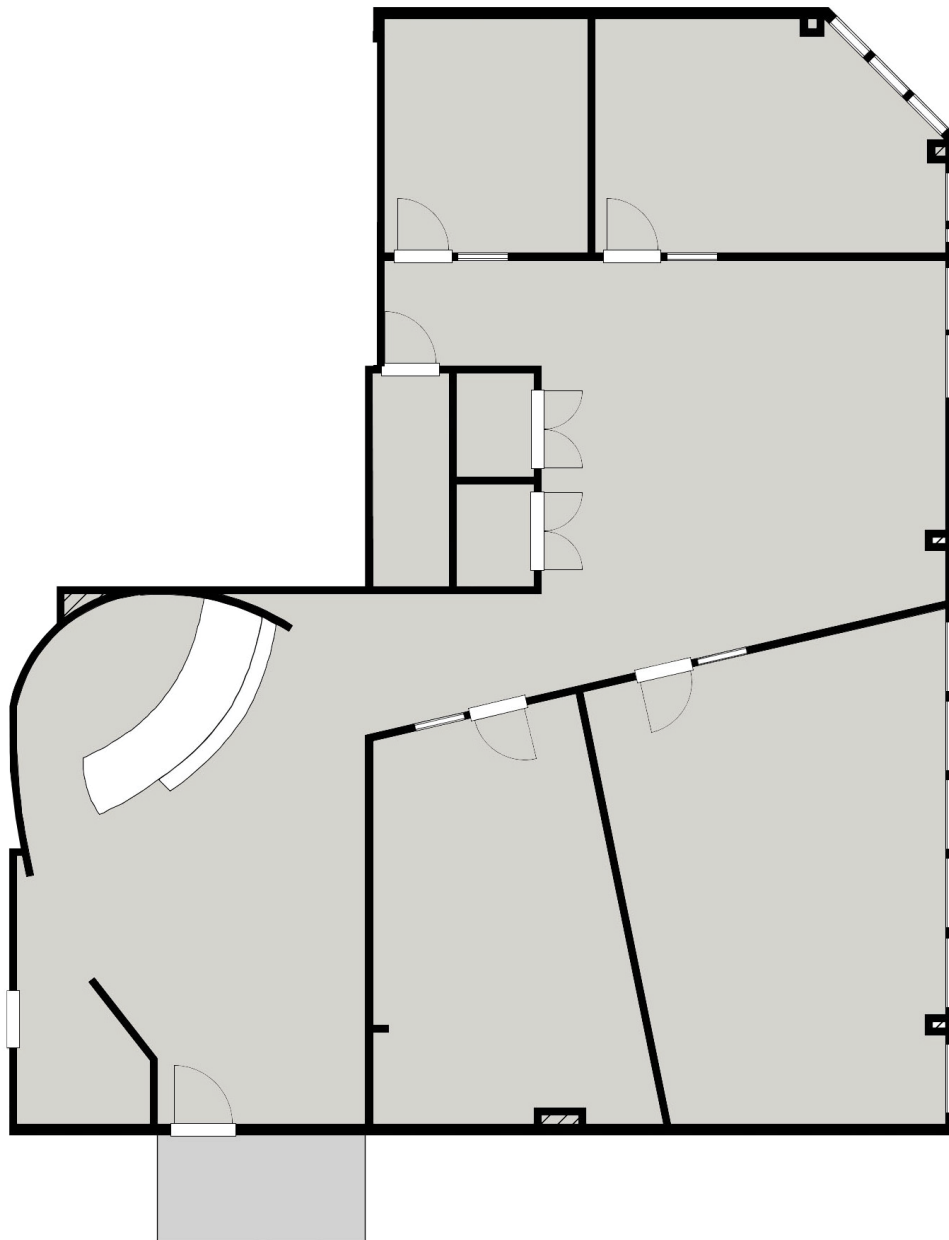
**INSIDE EDGE**  
PROPERTIES  
BROKERAGE

6 ANTARES DR, PHASE I - SUITE 202



# FLOORPLAN

**SUITE 202**  
1,730 SQ. FT.



FOR INQUIRIES, PLEASE CONTACT:  
[LEASING@IEPROPERTIES.COM](mailto:LEASING@IEPROPERTIES.COM)  
613.226.9902





**INSIDE EDGE**  
PROPERTIES  
BROKERAGE

6 ANTARES DR, PHASE I - SUITE 202



FOR INQUIRIES, PLEASE CONTACT:  
[LEASING@IEPROPERTIES.COM](mailto:LEASING@IEPROPERTIES.COM)  
613.226.9902





**INSIDE EDGE**  
PROPERTIES  
BROKERAGE



6 ANTARES DR, PHASE I - SUITE 202

## NEARBY AMENITIES



FOR INQUIRIES, PLEASE CONTACT:  
LEASING@IEPROPERTIES.COM  
613.226.9902